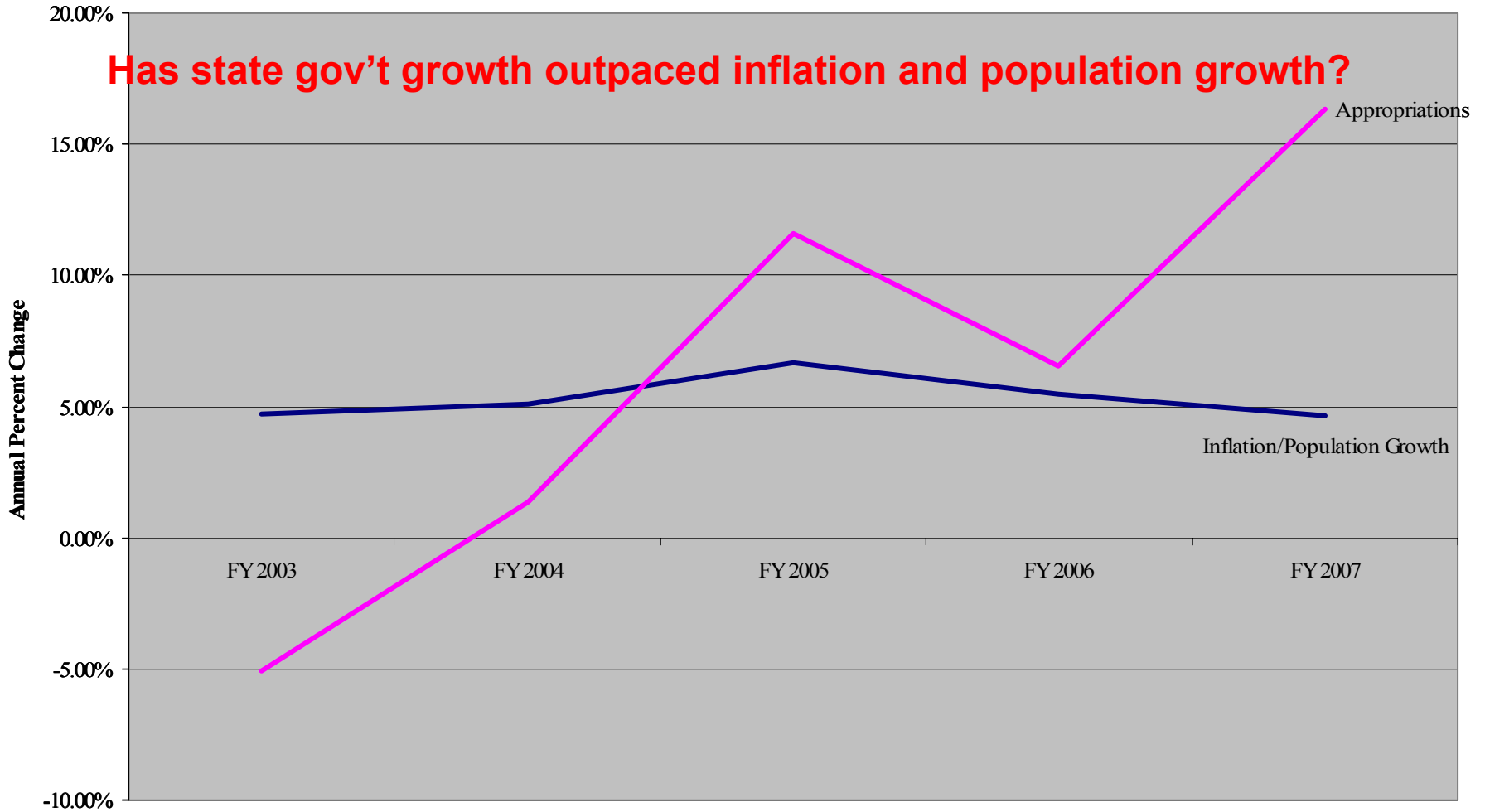
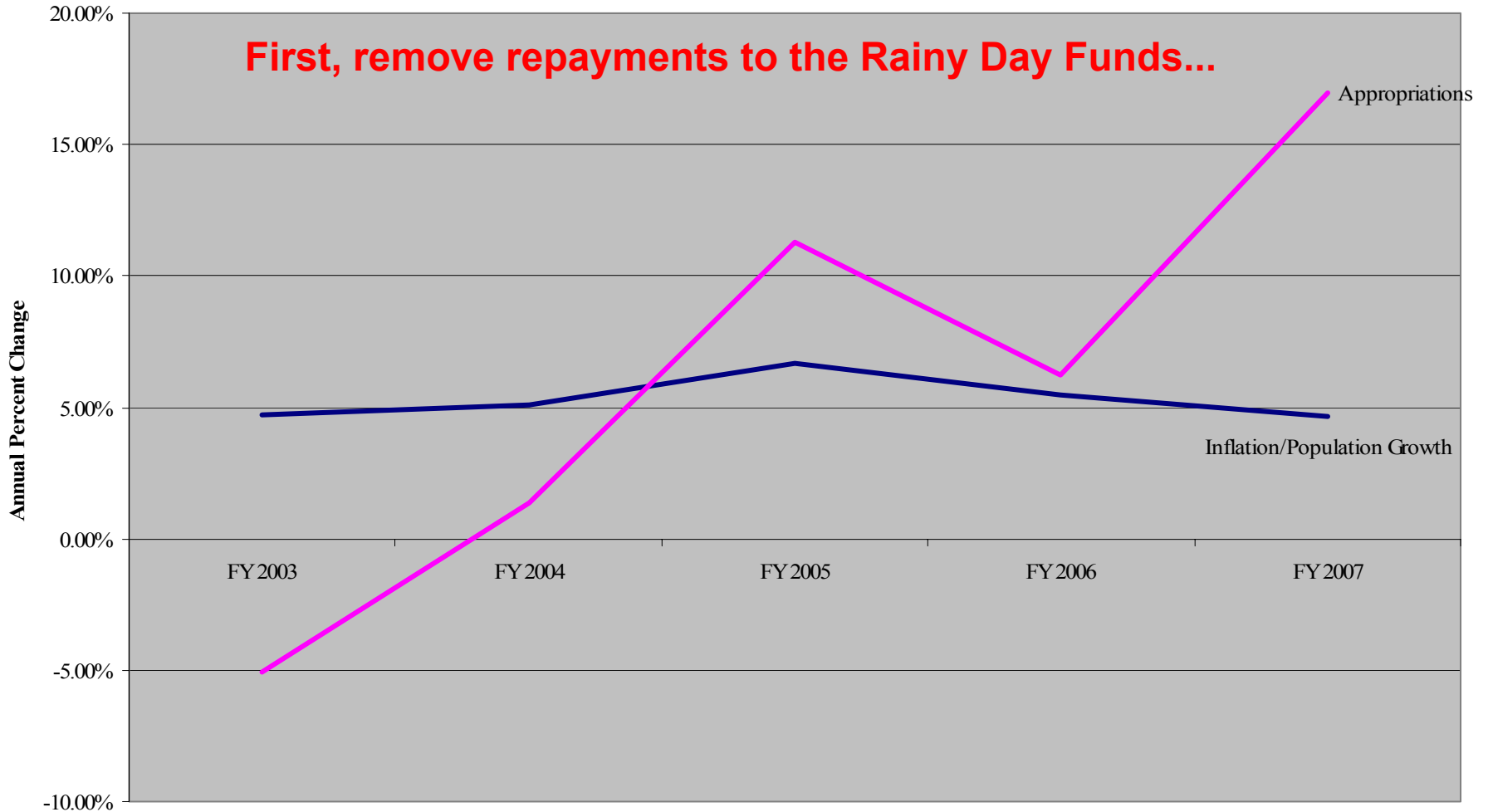


**Utah's Budget  
versus Inflation/Population Growth  
FY 2003 - FY 2007**



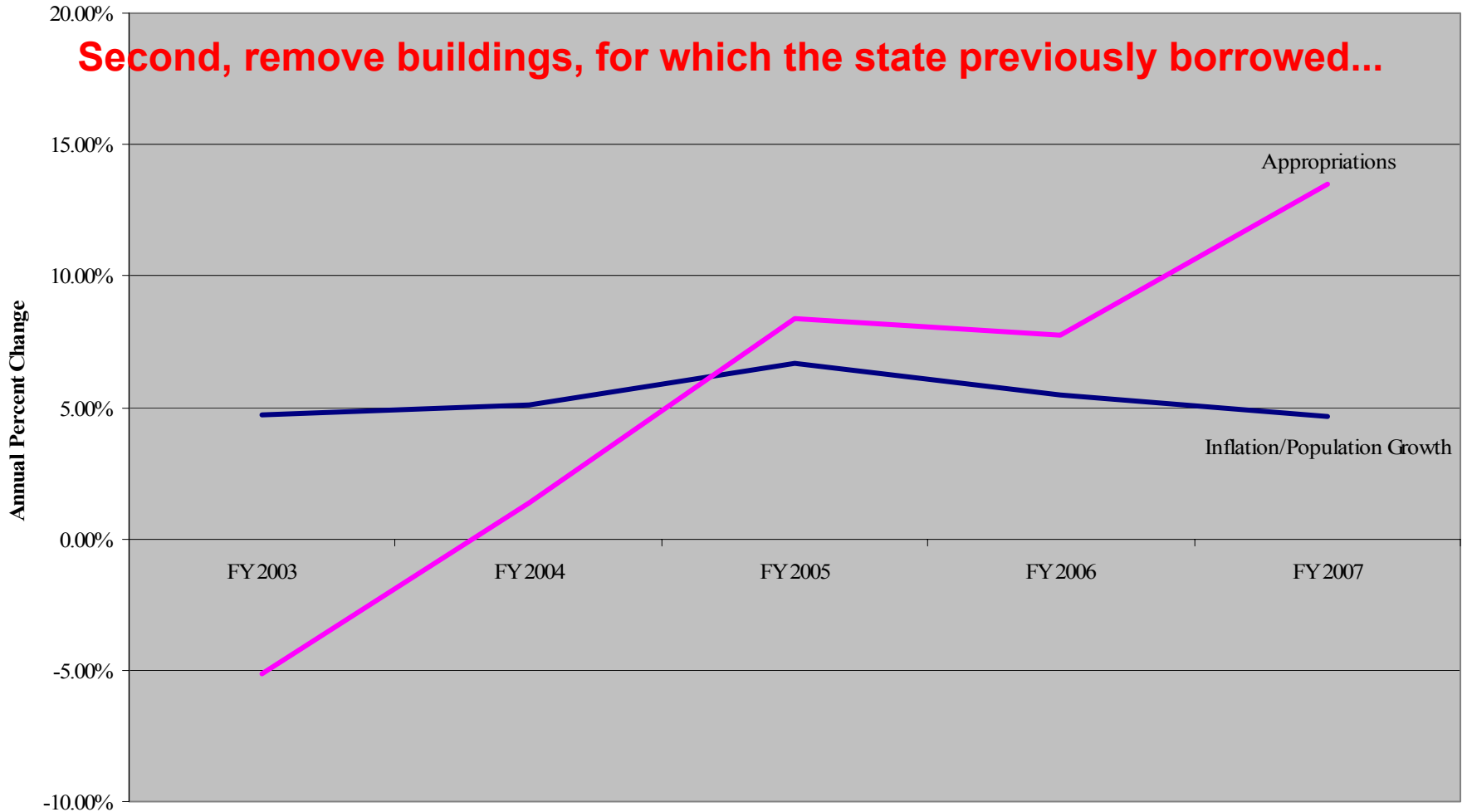
Appropriations shown are from General Fund (sales tax) and Education Fund (income tax)

**Utah's Budget - Not Including Appropriations to Rainy Day Funds  
versus Inflation/Population Growth  
FY 2003 - FY 2007**



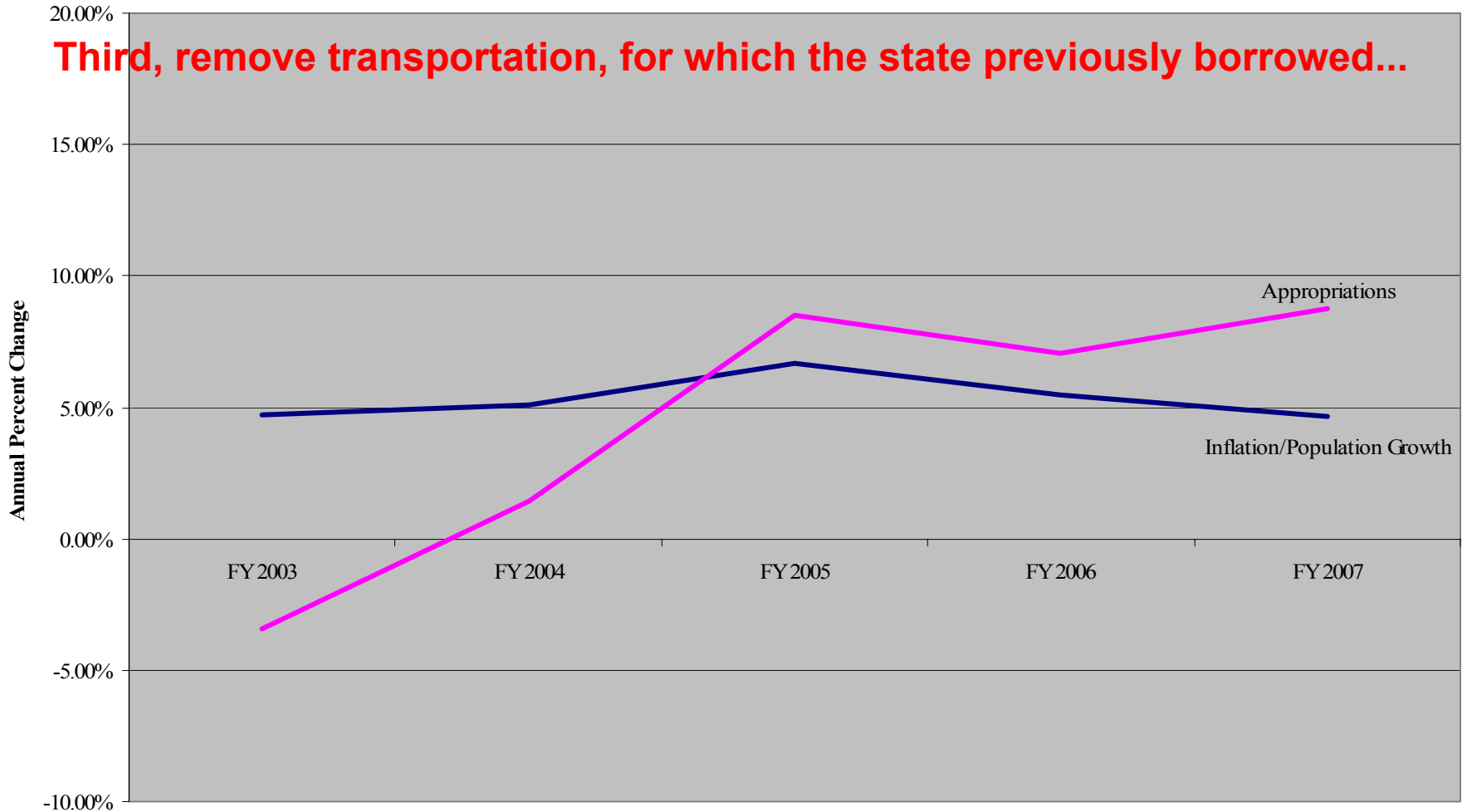
Appropriations shown are from General Fund (sales tax) and Education Fund (income tax)

**Utah's Budget - Not Including Rainy Day Funds or Buildings  
versus Inflation/Population Growth  
FY 2003 - FY 2007**



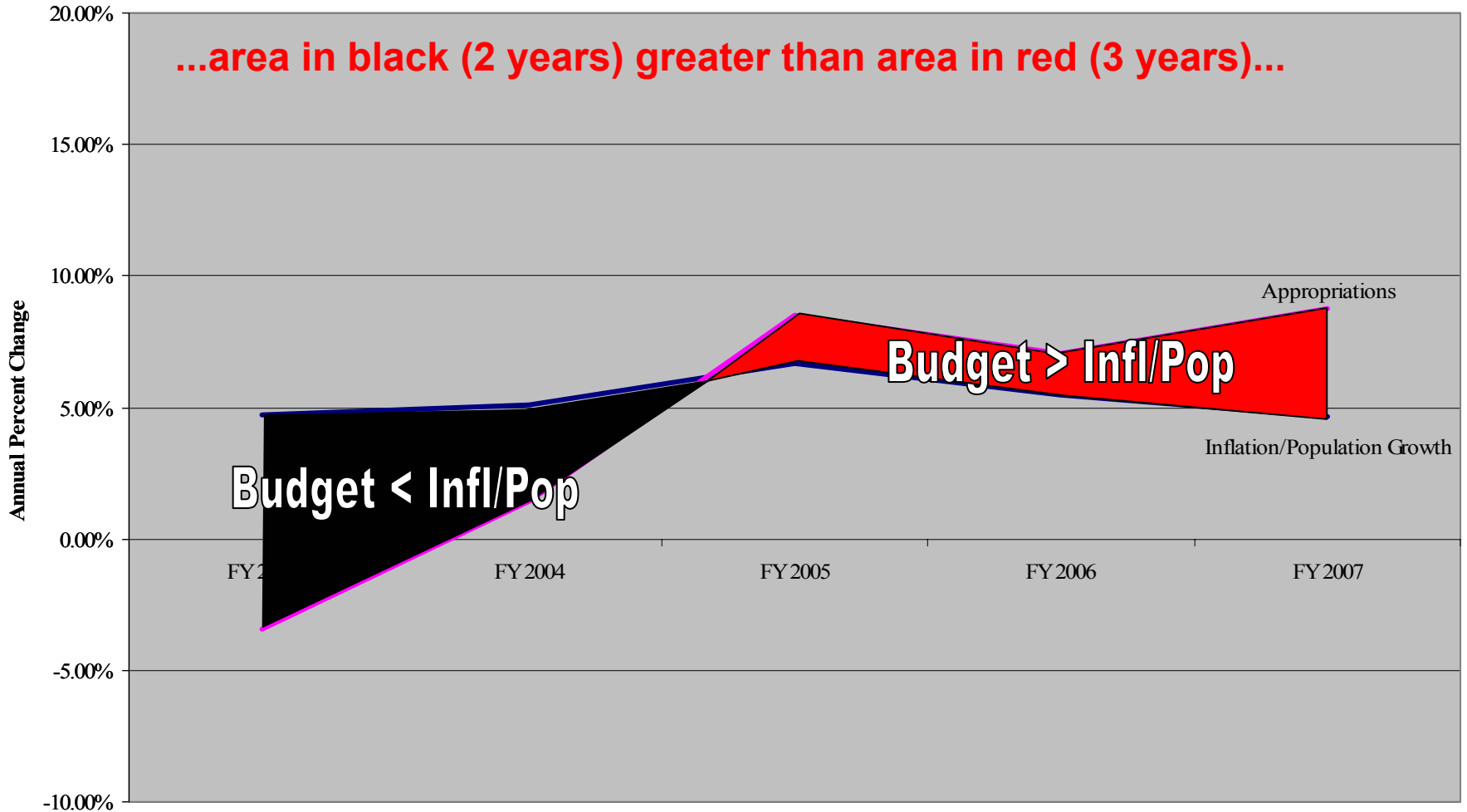
Appropriations shown are from General Fund (sales tax) and Education Fund (income tax)

**Utah's Budget - Not Including Rainy Day Funds, Buildings or Transportation  
versus Inflation/Population Growth  
FY 2003 - FY 2007**



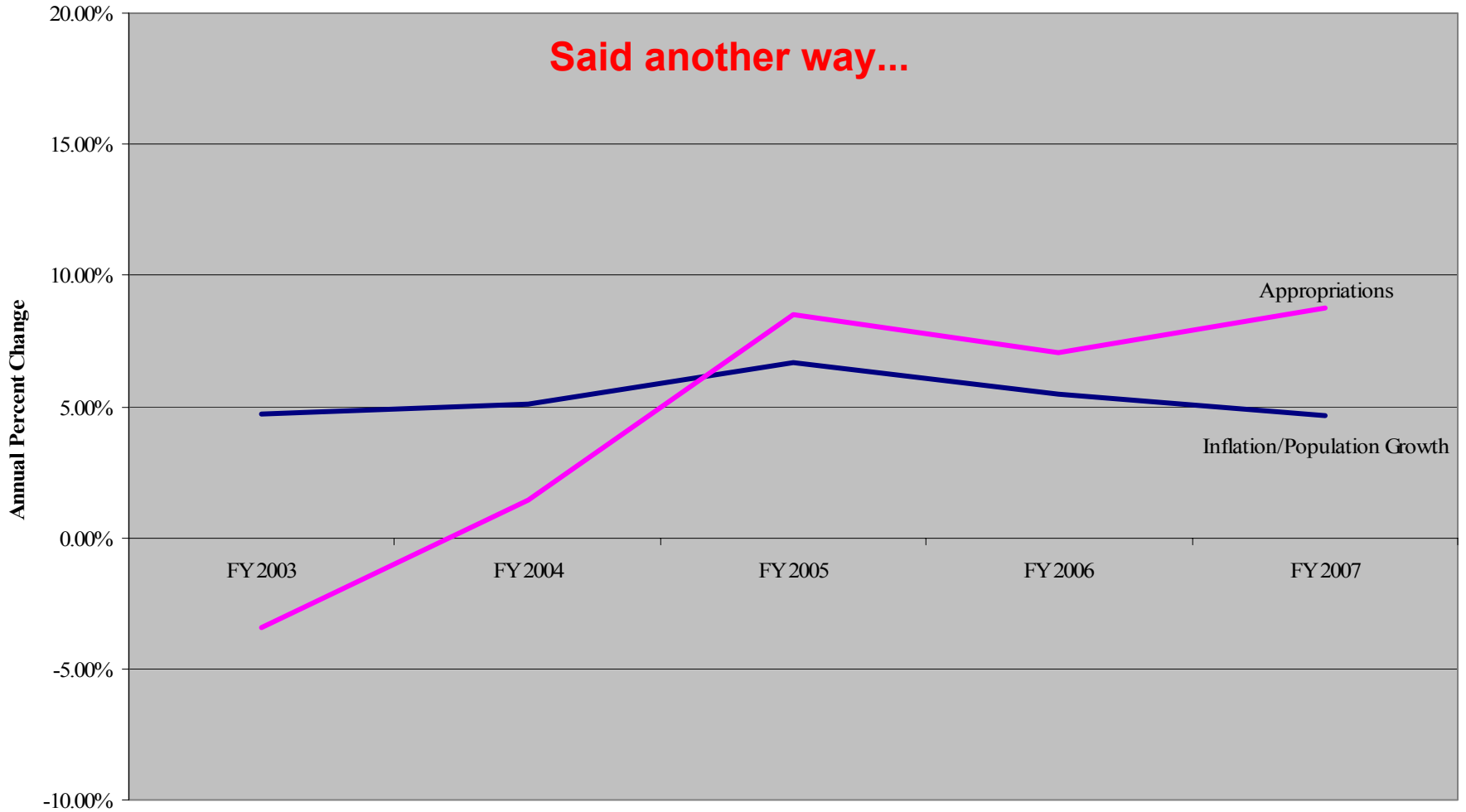
Appropriations shown are from General Fund (sales tax) and Education Fund (income tax)

**Utah's Budget - Not Including Rainy Day Funds, Buildings or Transportation  
versus Inflation/Population Growth  
FY 2003 - FY 2007**



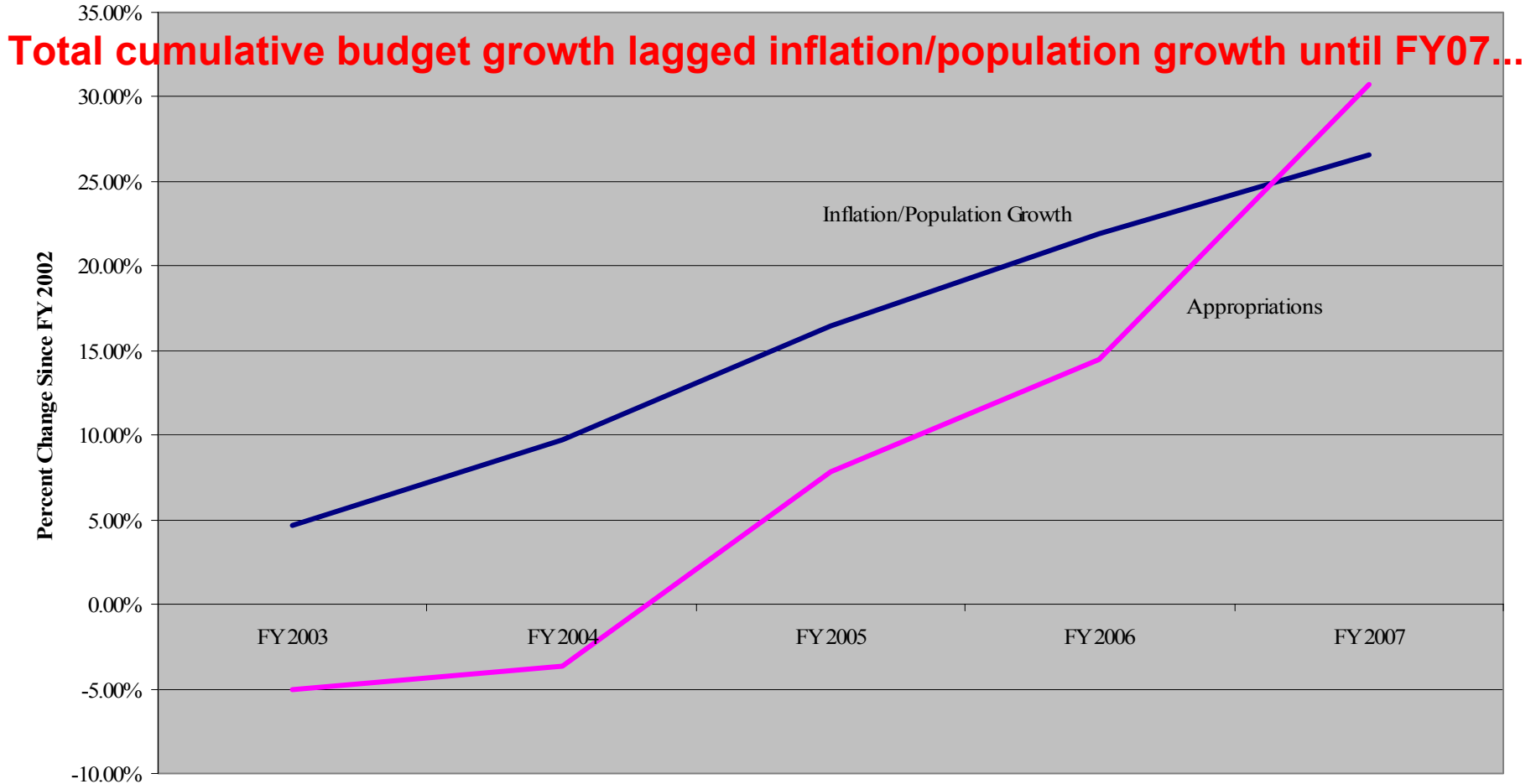
Appropriations shown are from General Fund (sales tax) and Education Fund (income tax)

**Utah's Budget - Not Including Rainy Day Funds, Buildings or Transportation  
versus Inflation/Population Growth  
FY 2003 - FY 2007**



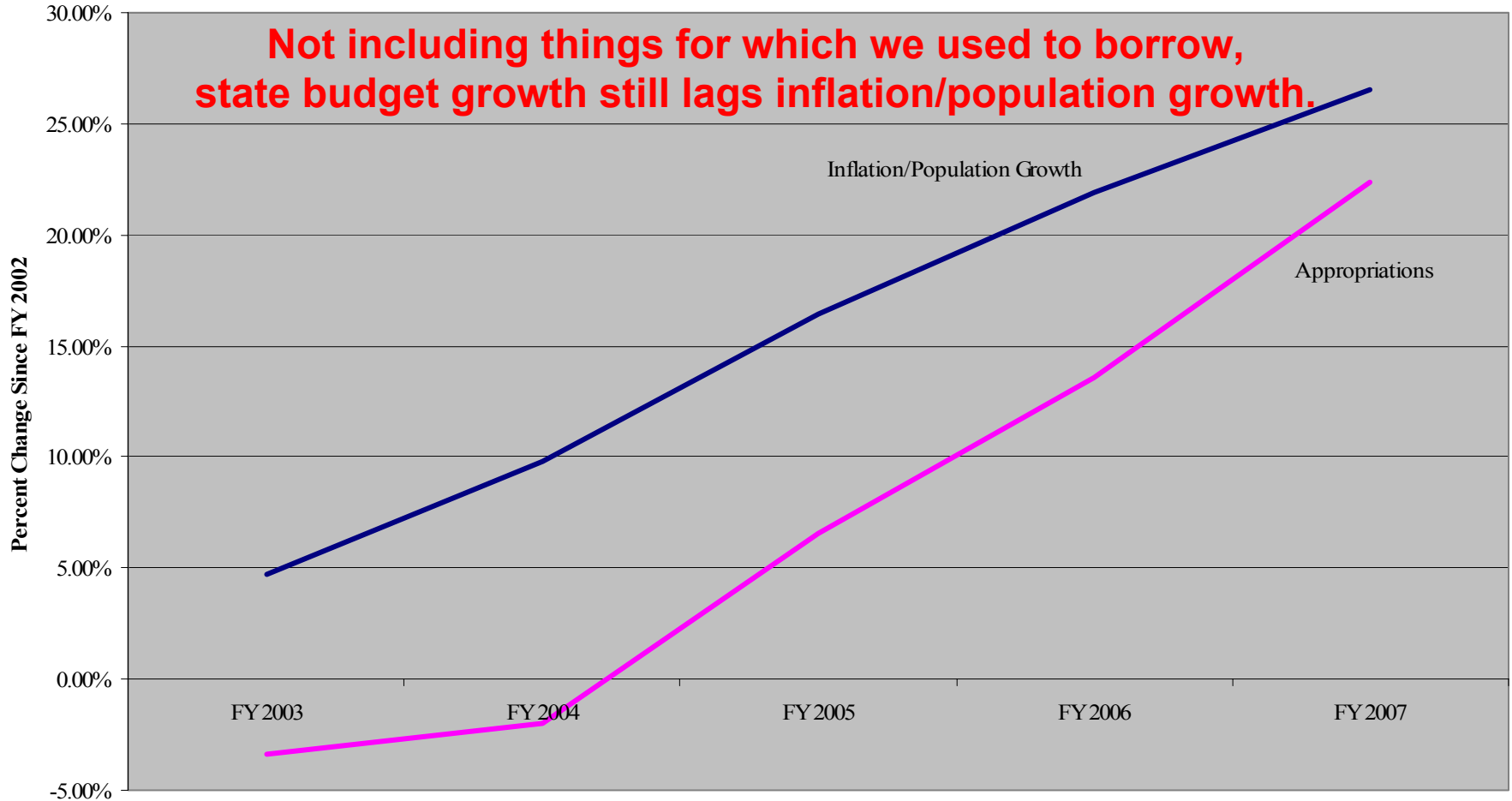
Appropriations shown are from General Fund (sales tax) and Education Fund (income tax)

**Utah's Budget  
Total Cumulative Growth  
versus Cumulative Inflation/Population Growth  
FY 2003 - FY 2007**



Appropriations shown are from General Fund (sales tax) and Education Fund (income tax)

**Utah's Budget**  
**Cumulative Growth Not Including Rainy Day Funds, Buildings, or Transportation**  
**versus Cumulative Inflation/Population Growth**  
**FY 2003 - FY 2007**



Appropriations shown are from General Fund (sales tax) and Education Fund (income tax)



# A Historical Perspective

FY 2002:

- Rainy Day funds:  
- \$113 M
- Debt for roads:  
\$125 M
- Debt for buildings:  
\$89 M

FY 2007:

- Rainy Day funds:  
+ \$25 M
- Debt for roads:  
\$0
- Debt for buildings:  
\$0